

# SLOUGHHOUSE

## Resource Conservation District

HERALD | SLOUGHHOUSE | WILTON

### Regular Meeting of the Board Sloughhouse Resource Conservation District Agenda

When: April 10, 2024  
Where: Rancho Murieta Community Services  
15160 Jackson Rd.  
Rancho Murieta, CA 95683

or

Via Zoom: <https://us02web.zoom.us/j/84032627877>  
Meeting ID: 840 3262 7877

Time: 12:30 pm – 3:30 pm

**PUBLIC COMMENT** – Any member of the public may address the Board concerning any matter on the agenda before or during its consideration of the matter. Public comment is limited to three (3) minutes per person and no more than fifteen (15) minutes per topic. For good cause, the Board Chairman may waive these limitations.

**AGENDA ITEM TIME FRAME** – All time allotments are suggested by staff and are an estimate only and subject to change.

**ACCESSIBILITY** - If you have a disability and require a reasonable accommodation to fully participate in this event, please contact SRCD Staff before the day of the meeting via email [info@SloughhouseRCD.org] or telephone [916-526-5447] to discuss your accessibility needs.

#### **OPENING / CALL TO ORDER**

#### **PUBLIC COMMENT FROM THE FLOOR (Non-Agenda Items)**

**TREASURY REPORT:** (10 minutes)

**CONSENT CALENDAR:** (5 minutes)

*Any Board member may request and remove any item from the consent agenda and place that item on the regular portion of the agenda as specified.*

- a. Agenda – April 10, 2024
- b. Minutes – March 13, 2024
- c. Financial Report – April 2024

**REPORTS: (15 minutes)**

- a. USDA Natural Resource Conservation Service (NRCS)
- b. Sacramento County Ag. Commissioners Report
- c. SRCD Board Member Reports

**GENERAL BUSINESS ACTION ITEMS: (80 minutes)**

1. Office Space Update
2. Range Camp 2024
3. Wildeye Telemetry Update
4. Grant Updates
  - a. Conservation Agriculture Planning Grant Program (CAPGP)
  - b. Water Efficiency Technical Assistance (WETA)

**GROUNDWATER SUSTAINABILITY AGENCY ACTION ITEMS: (60 minutes)**

5. Cosumnes Groundwater Authority
  - a. Member Contributions
  - b. Fee Study Implementation
6. South American Subbasin

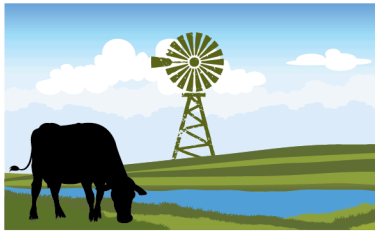
**INFORMATIONAL / DISCUSSION ITEMS (10 minutes)**

7. SRCD Staff Report

**IDENTIFICATION OF ITEMS FOR FUTURE MEETINGS**

*Board Members may request items to be placed on future agendas.*

**ADJOURNMENT**



# SLOUGHHOUSE

## Resource Conservation District

HERALD | SLOUGHHOUSE | WILTON

### Meeting of the Board - MINUTES Sloughhouse Resource Conservation District

When: Wednesday, March 13, 2024  
Where: Rancho Murieta Community Services  
15160 Jackson Rd.  
Rancho Murieta, CA 95683

or

Via Zoom: <https://us02web.zoom.us/j/84032627877>  
Meeting ID: 840 3262 7877

Time: 12:30 pm – 3:30 pm

Board Members: Barbara Washburn, Herb Garms, Gary Silva Jr., Lindsay Carter (absent), Jay Schneider

Associate Directors: Teresa Flewellyn

Staff: Brittany Friedman

*\*\*A recording of this meeting can be found on the Sloughhouse RCD website at:*  
<https://srcd.specialdistrict.org/meetings> \*\*

#### **OPENING**

*Chairman Garms called the meeting to order at 12:35pm.*

#### **PUBLIC COMMENT**

Any member of the public may address the Board concerning any matter not on the Agenda within the Board/District's jurisdiction.

#### **TREASURY REPORT**

Director and Treasurer Silva provided an update on SRCD's financials including the current invoices for the month. It was recommended to staff they provide paper statements of Five Star transactions to the Board for future meetings.

#### **CONSENT CALENDAR:**

- a. Agenda – March 13, 2024
- b. Minutes – February 14, 2024
- c. Financial Report – March 2024

*Director Schneider moved to approve the consent calendar.  
Director Washburn seconded the motion.  
The motion passed with four in favor and one absent (Carter).*

## **REPORTS**

- a. **USDA Natural Resource Conservation Service (NRCS)**  
Representative Toney Tillman reported that there have been 12 applications approved for funding for the IRA program at this time. The EQUIP Organic Transition Initiative application deadline is May 24, 2024. There are also some other opportunities/practices available such as the CSP IRA and ACT NOW which addresses climate and energy conservation that are listed on the NRCS website. <https://www.nrcs.usda.gov/>. The deadline to apply for these programs is also May 24, 2024.
- b. **Sacramento County Ag. Commissioners Report**  
Ag Commissioner, Chris Flores, sent a written update on the Sac County Department of Ag. including upcoming events, personnel changes and Ag program updates. A copy of this material can be found on the Meetings page of the Sloughhouse website: <https://www.sloughhousercd.org/#/meetings>
- c. **SRCD Board Member Reports**  
Director Silva thanked Asst. Director Flewellyn on the CGA BBQ Luncheon efforts and the great turnout that was had. The other directors seconded this appreciation. He also let the Board know that staff has developed a Monitoring Binder for the Spring groundwater monitoring efforts and that we will be working with O’Sullivan Pump Co. and provide an update on this at the April Board Meeting.  
Director Washburn reported on an upcoming meeting she will have with Tom Ellison of the Florin RCD and announced that Florin has plans to disband as an RCD and focus their efforts as a Water District, instead. She also presented information on a recent Sacramento County RCD meeting and the possibility of a future Sacramento RCD formation. More information will be shared on this effort as it develops.  
Director Schneider discussed the origin and history of RCDs and expressed concern that Sloughhouse’s focus should be agriculture and groundwater. The Board discussed Ad Valorem taxes that Director Schneider’s father helped to establish for the RCD.

## **GENERAL BUSINESS ACTION ITEMS**

### **1. Office Space**

The Board viewed a potential office space for Sloughhouse RCD located on Jackson Rd. They discussed the space itself, its history and what it could be in terms of an office space with potential space for projects or other employees, storing files, etc. At this time there is no cost estimate for the rent or set-up needed to establish a working office. Staff asked the board to provide direction on moving forward with pursuing this office space and bringing back hard costs at a future meeting.

*Director Schneider moved to pursue a potential contract and research steps needed to acquire this space.*

*Director Silva seconded the motion.*

*The motion passed with four in favor and one absent (Carter).*

**2. Carbon Pollution Reduction Grant (CRPG) Carbon Farming Partnership**

Staff presented an opportunity SRCD was approached with by the Sacramento Metropolitan Air Quality Management District (SMAQMD) to be a potential partner on the Carbon Pollution Reduction Grant. A letter of commitment is needed so that the applying party can include our letter of intent by March 28, 2024. The Board discussed what this would entail for us and made several amendments to the Letter of Commitment presented. They also suggested to staff that information on the Sacramento County Climate Task Force and Climate Action Plan be presented at a later meeting to the Board as it was mentioned several times in the Letter (but later removed).

*Director Silva moved to authorize and send the Letter of Commitment with the amendments agreed upon by the Board.*

*Director Washburn seconded the motion.*

*The motion passed with four in favor and one absent (Carter).*

**3. Conservation Agriculture Planning Grant Program (CAPGP) Update**

Staff provided a general update regarding the CAPGP Grant. The Interest Form used to ascertain interested applicants for the CAPGP Conservation Plans was open through March 7, 2024. Seven applicants applied for the conservation plans. The Board reviewed and selected the farmers who will receive their selected plan. Staff will now coordinate these efforts with the Technical Service Providers to have the plans written. A second round of applications will now be opened to close out the CAPGP plans available.

*Director Washburn moved to approve the seven applicants and begin the conservation plan writing process.*

*Director Schneider seconded the motion.*

*The motion passed with four in favor and one absent (Carter).*

**4. Water Efficiency Technical Assistance (WETA) Grant Update**

The Board discussed the update of the Hiring Committee for the WETA position. The hiring committee selected three applicants who will have interviews with staff in March. They are hopeful an offer will be made for someone to start in early April.

Staff presented an agreement to bring on Connor Higgins at Yolo RCD as a Consultant to fill in some of the gaps and provide mentoring/training to the Program Coordinator.

Connor had previously expressed that he may be able to assist us in beginning this grant process. The Board reviewed the Agreement and with the amendments Legal made, they agreed to sign it and move forward with bringing on a consultant for this grant.

*Director Silva moved to authorize and sign the SRCD-Yolo RCD WETA Agreement.*

*Director Schneider seconded the motion.*

*The motion passed with four in favor and one absent (Carter).*

## GROUNDWATER SUSTAINABILITY AGENCY ACTION ITEMS

### 5. Cosumnes Groundwater Authority

#### a. CGA Fee Study

The Board discussed the CGA Draft Fee Study that was presented at the last CGA Meeting and how it may impact SRCD as a GSA. SCI will be presenting a Final Fee Study at the April CGA Meeting. There was discussion on the budget and how it may change as well as reserves being held by CGA and the GSA's. The Board also discussed projects for CGA and how they are required for the 5-year GSP Update. Member contributions may need to be looked at again for the next year as it relates to these projects and reserve funds. Finally, the Board discussed data used for the Fee Study, data gaps and new housing being developed in the basin and how that will affect fees collected or omitted.

### 7. SRCD Mapping Updates

Board member Gary Silva and public member Tish Espinosa have been working to develop more detailed maps of Sloughhouse RCD in terms of specialty crops, parcels, irrigated lands and general boundaries. These maps have several layers and can be made to be interactive once completed. The draft maps were presented to the Board and they discussed the possibility of using them for future needs and printing them out for the office. Several technical assistants from GeoAssist created these and have invoiced the RCD for their work.

*Director Silva moved to approve the invoice to GeoAssist.*

*Director Schneider seconded the motion.*

*The motion passed with three in favor and two absent (Carter and Washburn).*

## INFORMATIONAL/DISCUSSION ITEMS

### 8. SRCD Staff Report

Staff provided a brief report highlighting upcoming events including a SLEWS Field Day on March 20 and the 2024 Spring Central Sierra Regional Meeting on March 15.

Staff reminded the Board that Form 700's are due by April 1.

Asst. Director Flewellyn discussed the installation of the bubbler/telemetry from Wildeye at Denier Ranch. The next step will be training interested members on the dashboard to access the monitoring information.

## IDENTIFICATION OF ITEMS FOR FUTURE MEETINGS

The Board approved the following future agenda items by consensus:

- Future SRCD office space
- Spring Groundwater Monitoring Update
- Draft SRCD Budget and Work Plan
- WETA hiring updates

## ADJOURNMENT

*Chair Garms adjourned the meeting at 4:06pm.*

# Sloughouse Resource Conservation District

## Expenses Needing Board Approval

All Dates

DATE	AMOUNT	MEMO/DESCRIPTION
Calaveras County Resource Conservation District		
04/05/2024	25.00	Central Sierra RCD Regional Meeting
<b>Total for Calaveras County Resource Conservation District</b>	<b>\$25.00</b>	
CARCD		
04/05/2024	9,525.19	Friedman Wages - March 24
<b>Total for CARCD</b>	<b>\$9,525.19</b>	
Kronick		
04/05/2024	2,314.60	Legal Services through February 2024
<b>Total for Kronick</b>	<b>\$2,314.60</b>	
<b>TOTAL</b>	<b>\$11,864.79</b>	

# Sloughouse Resource Conservation District

## Balance Sheet

As of April 5, 2024

	TOTAL
<b>ASSETS</b>	
Current Assets	
Bank Accounts (Sac County + Five Star Bank)	
Operations Sustainability Reserves (6576) - 2	247,999.19
Public Checking (2162) - 2	188,698.45
Special Projects Reserve (6568) - 2	247,999.19
<b>Total Bank Accounts (Sac County + Five Star Bank)</b>	<b>\$684,696.83</b>
Accounts Receivable	
Accounts Receivable (A/R)	6,142.35
<b>Total Accounts Receivable</b>	<b>\$6,142.35</b>
<b>Total Current Assets</b>	<b>\$690,839.18</b>
<b>TOTAL ASSETS</b>	<b>\$690,839.18</b>
<b>LIABILITIES AND EQUITY</b>	
Liabilities (Accounts Payable)	
Current Liabilities	
Accounts Payable	
Accounts Payable (A/P)	11,864.79
<b>Total Accounts Payable</b>	<b>\$11,864.79</b>
<b>Total Current Liabilities</b>	<b>\$11,864.79</b>
<b>Total Liabilities (Accounts Payable)</b>	<b>\$11,864.79</b>
Equity	
Opening balance equity	592,490.94
Retained Earnings	-6,518.03
Net Income	93,001.48
<b>Total Equity</b>	<b>\$678,974.39</b>
<b>TOTAL LIABILITIES AND EQUITY</b>	<b>\$690,839.18</b>



# Sloughouse Resource Conservation District

## Budget vs. Actuals: SRCD FY 23-24 Budget - FY24 P&L

July 2023 - June 2024

	TOTAL			
	ACTUAL	BUDGET	OVER BUDGET	% OF BUDGET
<b>Income</b>				
4600 Services (Staff Support)	78,929.86	161,000.00	-82,070.14	49.02 %
Billable Expenditure Revenue				
1200 Accounts Receivable	0.00		0.00	
<b>Total Billable Expenditure Revenue</b>	<b>0.00</b>		<b>0.00</b>	
<b>Contributed income</b>				
4500 Grant Income		194,051.00	-194,051.00	
<b>Total Contributed income</b>		<b>194,051.00</b>	<b>-194,051.00</b>	
<b>Investment income</b>				
4900 Interest Income (94941000)	1,572.82	20,000.00	-18,427.18	7.86 %
<b>Total Investment income</b>	<b>1,572.82</b>	<b>20,000.00</b>	<b>-18,427.18</b>	<b>7.86 %</b>
<b>Other Income</b>				
4100 Tax Revenue (91-)	102,486.78	146,500.00	-44,013.22	69.96 %
4200 Groundwater Sustainability Fee	85,890.11	149,413.00	-63,522.89	57.49 %
4700 Misc. Other Revenue (97979000)	1,715.65	15,000.00	-13,284.35	11.44 %
<b>Total Other Income</b>	<b>190,092.54</b>	<b>310,913.00</b>	<b>-120,820.46</b>	<b>61.14 %</b>
<b>Total Income</b>	<b>\$270,595.22</b>	<b>\$685,964.00</b>	<b>\$ -415,368.78</b>	<b>39.45 %</b>
<b>GROSS PROFIT</b>	<b>\$270,595.22</b>	<b>\$685,964.00</b>	<b>\$ -415,368.78</b>	<b>39.45 %</b>
<b>Expenses</b>				
5370 Office Supplies (Consumable) (20207600)	4,322.80	10,000.00	-5,677.20	43.23 %
Bank fees & service charges				
5200 Assessment/Collections Services (20250700)		1,750.00	-1,750.00	
<b>Total Bank fees &amp; service charges</b>		<b>1,750.00</b>	<b>-1,750.00</b>	
<b>Memberships &amp; subscriptions</b>				
5260 Dues, Memberships, Subscriptions, Publications, etc. (20206100)	1,041.00	4,000.00	-2,959.00	26.03 %
<b>Total Memberships &amp; subscriptions</b>	<b>1,041.00</b>	<b>4,000.00</b>	<b>-2,959.00</b>	<b>26.03 %</b>
<b>Office supplies</b>				
Printing & photocopying				
5240 Printing and Copying	141.67		141.67	
<b>Total Printing &amp; photocopying</b>	<b>141.67</b>		<b>141.67</b>	
<b>Shipping &amp; postage</b>				
5340 Postage/Shipping (20292200)		5,000.00	-5,000.00	
<b>Total Shipping &amp; postage</b>		<b>5,000.00</b>	<b>-5,000.00</b>	
<b>Total 5370 Office Supplies (Consumable) (20207600)</b>	<b>5,649.47</b>	<b>30,750.00</b>	<b>-25,100.53</b>	<b>18.37 %</b>
5510 CDFA Conservation Ag Planning Grant (CAPGP)		40,000.00	-40,000.00	
5520 CDFA Water Efficiency Technical Assistance Grant (WETA)		109,338.00	-109,338.00	
<b>Contract &amp; professional fees</b>				
5330 Other Professional Services (20259100)	220.00	15,000.00	-14,780.00	1.47 %
5380 Cosumnes Groundwater Authority Contribution (20281204)	500.00	149,413.00	-148,913.00	0.33 %
5390 South American Subbasin SGMA Contributions (20289900)		9,000.00	-9,000.00	
Accounting fees	3,450.00	8,000.00	-4,550.00	43.13 %

# Sloughouse Resource Conservation District

## Budget vs. Actuals: SRCD FY 23-24 Budget - FY24 P&L

July 2023 - June 2024

	TOTAL			
	ACTUAL	BUDGET	OVER BUDGET	% OF BUDGET
Legal fees				
5350 Legal - General (20253100)	16,632.50	15,000.00	1,632.50	110.88 %
5355 Legal - Groundwater (20253100)	12,079.67	15,000.00	-2,920.33	80.53 %
<b>Total Legal fees</b>	<b>28,712.17</b>	<b>30,000.00</b>	<b>-1,287.83</b>	<b>95.71 %</b>
<b>Total Contract &amp; professional fees</b>	<b>32,882.17</b>	<b>211,413.00</b>	<b>-178,530.83</b>	<b>15.55 %</b>
Insurance	2,396.00		2,396.00	
5300 Insurance (20205100)		2,500.00	-2,500.00	
<b>Total Insurance</b>	<b>2,396.00</b>	<b>2,500.00</b>	<b>-104.00</b>	<b>95.84 %</b>
Payroll expenses				
Salaries & wages				
5000 Staff Expenses (20254100)				
Staff Costs (Friedman)	93,027.75	96,056.00	-3,028.25	96.85 %
Staff Costs (Miller)	37,557.47	116,900.00	-79,342.53	32.13 %
Staff Costs (WETA)		26,102.00	-26,102.00	
<b>Total 5000 Staff Expenses (20254100)</b>	<b>130,585.22</b>	<b>239,058.00</b>	<b>-108,472.78</b>	<b>54.62 %</b>
<b>Total Salaries &amp; wages</b>	<b>130,585.22</b>	<b>239,058.00</b>	<b>-108,472.78</b>	<b>54.62 %</b>
<b>Total Payroll expenses</b>	<b>130,585.22</b>	<b>239,058.00</b>	<b>-108,472.78</b>	<b>54.62 %</b>
Travel				
5400 Transportation (Travel, Mileage)	260.68		260.68	
Hotels	480.90		480.90	
<b>Total Travel</b>	<b>741.58</b>		<b>741.58</b>	
Uncategorized Expense				
5250 SRCD GSA Expenses (General)	1,870.44		1,870.44	
5270 Education, Training, & Staff Development (20203600)	3,325.00	8,000.00	-4,675.00	41.56 %
5320 Misc. Expenses (20227504)	143.86	4,000.00	-3,856.14	3.60 %
<b>Total Uncategorized Expense</b>	<b>5,339.30</b>	<b>12,000.00</b>	<b>-6,660.70</b>	<b>44.49 %</b>
<b>Total Expenses</b>	<b>\$177,593.74</b>	<b>\$645,059.00</b>	<b>\$ -467,465.26</b>	<b>27.53 %</b>
NET OPERATING INCOME	<b>\$93,001.48</b>	<b>\$40,905.00</b>	<b>\$52,096.48</b>	<b>227.36 %</b>
NET INCOME	<b>\$93,001.48</b>	<b>\$40,905.00</b>	<b>\$52,096.48</b>	<b>227.36 %</b>

**Sloughhouse Resource Conservation District  
Board of Directors Meeting**

Agenda Date: April 10, 2024

Agenda Item #: 1  
Agenda Item Subject: Office Space

To: SRCD Board of Directors  
From: SRCD Staff

---

**Background**

A possible office space for Sloughhouse staff as well as a conference area for the Board to meet has become available at: 13147 Jackson Rd. This office space would also be able to house all of SRCD's archival documents.

Board Chair Herb Garms has indicated to Staff that he can discuss the terms of renting this office space from the owner and bring back the numbers to the Board very soon. He has met with the Landlord/leaser and has some updates on possible figures around the \$1,500 per month range.

Sloughhouse staff is looking for general thoughts and consensus from the Board at this time in regards to moving forward with establishing an office space.

**Recommendation**

Provide staff and Board Chair with feedback on the office and direction in terms of renting the space.

**Sloughhouse Resource Conservation District  
Board of Directors Meeting**

Agenda Date: April 10, 2024

Agenda Item #: #2

Agenda Item Subject: **UCANR Range Camp**

To: SRCD Board of Directors

From: SRCD Staff

---

**Background**

Presented by University of California Cooperative Extension to give 10-12th grade students the opportunity to explore the science and management of our natural resources with experienced professionals and university faculty, the [40th Annual Range and Natural Resources Camp](#) will be held in Half Moon Bay, CA from June 16-21<sup>st</sup>, 2024.

---

**Sessions and Activities include:**

- Riparian Habitats
- Rangeland Ecology
- Wildlife Management
- Soils
- Forestry
- Plant Identification



- Recreation
- Private & Public Lands
- Watershed Hydrology
- GPS / GIS Technology Applications
- Tour of Working Ranch
- Team Project Planning Competition

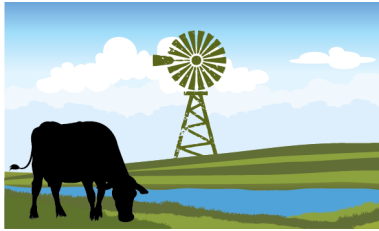


---

Approximately 80% of the high school students that attend Range Camp are unable to do so without financial support from outside organizations and individuals. The Registration Fee to attend Range Camp is \$750. The Fee covers a variety of necessary costs associated with running Range Camp. Camp is able to keep costs to the minimum necessary because it is fully organized and run by volunteers.

**Staff Recommendation**

- Authorize up to \$1,500 for scholarships for 2 high school students in or near the Sloughhouse RCD area.



# SLOUGHHOUSE

## Resource Conservation District

HERALD | SLOUGHHOUSE | WILTON

### 40<sup>th</sup> Range Camp Scholarship Application

The Sloughhouse Resource Conservation District is looking to support up to two high school students (must have completed 9<sup>th</sup> grade by camp) from Rural Sacramento County with scholarships to attend the [University of California Agriculture and Natural Resources Range Camp](#) (a \$750 cost) in Half Moon Bay, CA from June 16<sup>th</sup> – 21<sup>st</sup>, 2024.

20-25 students will be selected in total for this camp. All campers will receive: a certificate of completion, t-shirt and camp backpack and sticker.

Interested campers who'd like to apply for this scholarship to cover the cost of the Camp should complete and return this form to Sloughhouse RCD at [info@SloughhouseRCD.org](mailto:info@SloughhouseRCD.org).

Make sure to also apply online for the initial Range Camp at [https://ucanr.edu/sites/rangecamp/Forms\\_and\\_Registration/](https://ucanr.edu/sites/rangecamp/Forms_and_Registration/)

Applicant Name:	Phone Number:  Email:
High School Name:  Grade (in Spring 2024):	Home Address:

### Please provide a separate page with a response to the following questions (max 2 pages):

- A brief overview of who you are. This should include your connection to Sacramento County, where you live, your background, etc.
- An overview of past and current rangeland and/or natural resource-related activities (*ex: hobbies, field-trips, major camping/hiking experiences, ranch or farm work*).
- What things related to environmental science, wildlife management, livestock production, botany/plant ecology, and other natural resources and land management practices are you interested in learning about?
- If awarded, do you agree to provide a brief presentation/overview of your Range Camp experience with the Sloughhouse RCD Board of Directors?

**Sloughouse Resource Conservation District  
Board of Directors Meeting**

Agenda Date: April 10, 2024

Agenda Item #: 3

Agenda Item Subject: **Wildeye Monitoring Updates**

To: SRCD Board of Directors

From: SRCD Staff

---

**Background**

- Wildeye Monitoring offers remote monitoring devices for collecting and interpreting data from meters and sensors as well as training for all users and interested Board members.
- The installation has been completed at Denier Ranch and the Dashboard is up and running.

All parties interested in being trained on the dashboard can book a training with Wildeye. Once the initial training is complete the data from the network that Al Foley manages will be made available to be incorporated into our dashboard.

The previously approved quote amount did increase to \$4,671.58 and staff is looking for approval to pay this amount to Wildeye.

**Attachments:** [Wildeye Well Equipment Install Quote](#)

**Recommendations**

Approve and authorize the quote to Wildeye for services provided.



# SALES INVOICE

Sloughhough Resource Conservation District  
 8968 Elk Grove Blvd Suite 1-207  
 Elk Grove  
 CA 95624

**Invoice Date:**  
 03/15/2024

**Invoice Number**  
 SI-00002123

**Reference:**  
 Herb/Gary

**Outpost Central Corp**  
 dba Wildeye  
 PO Box 26341  
 Fresno  
 CA 93729

Code	Description	Qty	Price	Discount	Total
WILD-M-R-NACS-NACS	wildeye Enterprise rechargeable Cat-M (4G) datalogger with 2 input cables: cable #1: M12 cable type (N), with analogue 4-20 mA (A), counter(C) input, and SDI12 (S) inputs cable #2: M12 cable type (N), with analogue 4-20 mA (A), counter(C) input, and SDI12 (S) inputs External antenna. [USA]	1	1,086.73	100%	0.00
ACC-ANT-EXTER-700-3DB-5M	700MHz 4G Antenna, waterproof, with r/a bracket and 5m cable, SMA connector with rubber boot [USA]	1	105.08	100%	0.00
LAB-SURVEY-WELL	Survey of Well to determine if it can be monitored reliably. Survey may include lowering bubbler airline into well and well soundings. Includes labor and mileage, as well as any incidental parts used during survey.	1	250.00	0%	250.00
LAB-INS-WELLSENSOR	Installation labor & parts for installing new well depth sensor down well access tube. Includes attaching cable appropriately for strain relief. Includes attaching sensor to wildeye and full commissioning and testing time & gas, + parts and labor.	1	1,250.00	0%	1,250.00
SUBS-ADV-12M PLAN A	Wildeye Annual Subscription for single sensor applications	1	220.00	0%	220.00
ACC-MET-WB-5120CABLE	Well Bubbler 5-120 Accessory Cable [USA]	1	240.00	100%	0.00
ACC-MET-WB-WGTS	airline weights for well bubbler	1	320.00	100%	0.00
ACC-MET-WB-5-120	Well Bubbler 5-120, 350ft depth max, 30 min max sampling rate [USA]	1	2,714.10	0%	2,714.10
ACC-SOLBRACKET-NP-5W.2	Completely assembled 5W panel with full fixed angle mounting bracket and power plug for Wildeye datalogger	1	204.00	100%	0.00

Charge	Price

<b>Sub Total</b>	4,434.10
<b>Charge Sub Total</b>	0.00
<b>Tax Total</b>	237.48
<b>Total</b>	4,671.58

**Sloughhouse Resource Conservation District  
Board of Directors Meeting**

Agenda Date: April 10, 2024

Agenda Item #: #3

Agenda Item Subject: **Grant Updates**

To: SRCD Board of Directors

From: SRCD Staff

---

**Background – CAPGP**

Sloughhouse RCD was awarded \$199,800 from the [California Department of Food and Agriculture’s \(CDFA\) Conservation Agriculture Planning Grant Program \(CAPGP\)](#) and the SRCD Board has already begun to work on the 2-year grant contract agreement.

- SRCD has entered into agreements with these certified conservation planners to write the plans.
  - Matthew Wacker – 2 Grazing Management Plans in Sacramento County and 1 in Tuolumne County
  - Matthew Lunn– 4 Carbon Farming Plans in Tuolumne County
  - Harol Gallardo – 8 Soil Health Plans (1 in Tuolumne, 7 in Sac County), 4 Carbon Farming Plans in Sacramento County and 1 CEMA Carbon Sequestration Plan in Sacramento County
  - Molly Taylor – 3 Carbon Farming Plans in Alpine County
  - WETA Program Coordinator – 2 Irrigation Water Management Plans in Sacramento County
  
- Identifying landowners whose property will receive the conservation plans.
  - Interest form: <https://www.surveymonkey.com/r/SRCDconservationplanning>
  - The first round of applicants concluded on March 7, 2024.
  - 10 landowners are currently working with TSP’s
  - A second round of applications is open up with new marketing materials going out. This round of applications will be open until the slots are filled up (hopefully until around June-July 2024)
  
- SRCD Staff Time for the Grant totals around \$19,250 to reimbursed to us



### **Background – CDFA Water Efficiency Technical Assistance Grant**

On July 28<sup>th</sup>, the CA Dept. of Food and Agriculture (CDFA) announced that Sloughhouse Resource Conservation District has been selected to receive a Water Efficiency Technical Assistance (WETA) award in the amount of \$ 432,153.00. CDFA staff has finalized the grant agreement documents including the Scope of Work and Budget. The end date for this grant is slated to be March 31, 2026.

The grant application requested funds to cover personnel costs (roughly 4% FTE of the District Manager position, 8% FTE of the Admin Coordinator position, and a Water Efficiency Program Coordinator at 75% FTE), supplies, travel, employee training, outreach supplies, and pump efficiency test. Under this agreement, an outside contractor/consultant can also be hired and utilized to complete project objectives.

An agreement been approved to hire Connor Higgins, Mobile Irrigation Land Manager, from Yolo RCD to act as a WETA Consultant as of April 1, 2024.

The **WETA role** has been filled! Christopher Timmer is joining the Sloughhouse Team as the Water Efficiency Program Coordinator. He has a wealth of knowledge in the field and will be a welcome addition to the RCD. He is local to Sacramento, has an impressive resume and is ready to hit the ground running. We will be setting him up for his success with a tour of the district, meeting with Connor Higgins, signing up for upcoming trainings and beginning to open the grant opportunity up to local farmers/ranchers.

Category	Name	Grant-Funded	Contractor Charge Rate	SRCD Amount	Planner
116 CPA Soil Health Management Plan	Sacramento County Farm 1	\$3,000	\$2,700	\$300	Harol Gallardo
	Sacramento County Farm 2	\$3,000	\$2,700	\$300	Harol Gallardo
	Sacramento County Farm 3	\$3,000	\$2,700	\$300	Harol Gallardo
	Sacramento County Farm 4	\$3,000	\$2,700	\$300	Harol Gallardo
	Sacramento County Farm 5	\$3,000	\$2,700	\$300	Harol Gallardo
	Tuolumne County Farm 1	\$3,000	\$2,700	\$300	Harol Gallardo
159 DIA Grazing Management	Sacramento County Farm 1	\$9,800	\$8,330	\$1,470	Matthew Wacker
	Sacramento County Farm 2	\$9,800	\$8,330	\$1,470	Matthew Wacker
	Tuolumne County Farm 1	\$9,800	\$8,330	\$1,470	Matthew Wacker
162 DIA Soil Health Management	Sacramento County Farm 1	\$7,200	\$6,480	\$720	Harol Gallardo
	Sacramento County Farm 2	\$7,200	\$6,480	\$720	Harol Gallardo
163 DIA Irrigation Water Management Design - 1-2 Designs with Pump Test	Sacramento County Farm 1	\$12,800	\$10,880	\$1,920	WETA Coordinator
	Sacramento County Farm 2	\$12,800	\$10,880	\$1,920	WETA Coordinator
218 CEMA Carbon Sequestration and Greenhouse	Sacramento County Farm 1	\$2,400	\$2,160	\$240	Harol Gallardo
Carbon Farm Plan	Pocket Ranch (Alpine County)	\$10,000	\$10,000	\$500	Molly Taylor
	Ace Hereford Ranch (Alpine County)	\$10,000	\$10,000	\$500	Molly Taylor
	Woollystar Ranch (Alpine County)	\$10,000	\$10,000	\$500	Molly Taylor
	Sacramento County Farm 1	\$10,000	\$9,000	\$1,000	Harol Gallardo
	Sacramento County Farm 2	\$10,000	\$9,000	\$1,000	Harol Gallardo
	Sacramento County Farm 3	\$10,000	\$9,000	\$1,000	Harol Gallardo
	Sacramento County Farm 4	\$10,000	\$9,000	\$1,000	Harol Gallardo
	Tuolumne County Farm 1	\$10,000	\$9,000	\$1,000	Harol Gallardo
	Tuolumne County Farm 2	\$10,000	\$9,000	\$1,000	Harol Gallardo
	Tuolumne County Farm 3	\$10,000	\$9,000	\$1,000	Harol Gallardo
Tuolumne County Farm 4	\$10,000	\$9,000	\$1,000	Harol Gallardo	
<b>Grant Total</b>		<b>\$199,800</b>	<b>\$180,070</b>	<b>\$21,230</b>	
			Tuolumne County RCD	\$2,000	
			SRCD Total	\$19,230	
			Estimated Staff Hours (\$50/hr)	385	

**Sloughhouse Resource Conservation District  
Board of Directors Meeting**

Agenda Date: April 10, 2024

Agenda Item #: #5

Agenda Item Subject: **Cosumnes Groundwater Authority Update**

To: SRCD Board of Directors

From: SRCD Staff

---

**Cosumnes Groundwater Authority (CGA) Overview**

Links: [Board Meeting Materials](#) | [Committee Meeting Materials](#)

**Upcoming CGA Board Meetings**

**Next Regular Meeting**

- Wednesday, May 1, 2024, 8:30-11:30am
- Location: Galt Police Department, 455 Industrial Dr., Galt, CA 95632
- A draft budget and work plan for the 24-25 Year will be looked at

**Member Contribution**

In December 2023, Sloughhouse RCD adopted and signed the Agency Contribution Agreement for Fiscal Year 2023-2024. At this time, Amador, City of Galt, OHWD and Sacramento County have paid their Member Contributions to CGA. Staff is looking for an approval from the Sloughhouse Board to pay either the full amount or half of the agreed upon member contribution to CGA.

Full amount today: \$148,402

or

Half in April: \$74,201

Half in May: \$74,201

**Attachment:** [CGA Member Contribution Invoice to Sloughhouse](#)

### **CGA Fee Study**

At the recent CGA Board meeting on April 10, the Board provided direction to move forward with the final fee study. It is worth noting that the Budgeted amount does not reflect the CGA Budget for the 24-25 Fiscal Year. A possible community meeting may be held in the future to discuss the fee with the Cosumnes Subbasin.

**Attachments:** [CGA Final Fee Study](#)

### **RECOMMENDATION:**

- General Board discussion as a GSA on the Fee Study

# INVOICE

**Cosumnes Groundwater Authority**  
8970 Elk Grove Blvd.  
Elk Grove, CA 95624

info@CosumnesGroundwater.org  
+1 (916) 526-5447



## Sloughouse Resource Conservation District (SRCD)

### Bill to

Sloughouse Resource Conservation  
District

### Ship to

Sloughouse Resource Conservation  
District

### Invoice details

Invoice no.: 28  
Terms: Due on receipt  
Invoice date: 02/07/2024  
Due date: 06/30/2024

#	Date	Product or service	Qty	Rate	Amount
1.		<b>Member Contribution</b> FY 23-24 Member Contribution	1	\$148,402.00	\$148,402.00

**Total** **\$148,402.00**

### Ways to pay



Contact Cosumnes Groundwater Authority to pay.

# Cosumnes Groundwater Authority

## Final Fee Study

April 3rd, 2024



# Budget Considerations

---

- The draft Fee Study references an inflationary mechanism – the Consumer’s Price Index for the San Francisco Bay Area – the budget (and rates) may be increased each year by the CPI or 5%, whichever is less.
- A ‘GSA Reserve’ is also included here, in the amount of **\$175,000**.
  - This will be held by individual GSAs and used for administration and project planning.
  - This has been changed to include more flexibility of use (admin and project planning).
  - The GSA Reserve is allocated to agricultural irrigators and public water system users only.
- Rates are scalable – the full budget amount does not have to be charged for each year. Elements of the budget may be reduced based on determined need in a given year.
- Rates may not exceed the maximum amounts listed in the fee study, except for the use of the inflationary mechanism (CPI) annually.

# Projected Budget

Budget Category / Task	Year 1	Notes
	FY 2024-25	
<i>State-Mandated Requirements</i>		
Annual Report Development	\$ 35,000	Development of required Water Year Annual Reports (due annually on April 1.)
Data Management System Maintenance	\$ 10,000	Estimated cost to input data and generate semi-annual reports.
GSP Period Update (5-Year Update)	\$ 50,000	Due to DWR by 1-27-27. Assumes \$150,000 for GSP update process.
Collection of Monitoring Network Data	\$ 25,000	Semi-annual collection of groundwater, surface water, and subsidence data.
<i>Administration and Management Actions</i>		
Personnel	\$ 175,000	Staffing for Board and GSA management, DWR coordination, contract management, and outreach.
Technical Support Services	\$ 50,000	On-call support from technical consultants for regular authority work.
Legal Services	\$ 30,000	Legal support for regular business and SGMA implementation.
Outreach and Engagement Supplies	\$ 10,000	Costs associated with public workshops and other outreach efforts.
Financial Audits	\$ 15,000	Yearly financial audits of public funds.
Miscellaneous Operating Expenses	\$ 5,000	Office supplies and other regular operating expenses.
Data Gap Filling Projects	\$ 50,000	Specific projects TBD.
<i>Projects</i>		
GSA Reserves	\$ 175,000	Funds held by member agency GSAs in support of administration and project feasibility exploration.
<i>Subtotal</i>	\$ 630,000	PPI Index Optionally Applied to Subtotal Each Fiscal Year (5% maximum increase).
Contingency / 5% of Budget	\$ 31,500	5% Contingency applied each year to Subtotal.
<b>Total Expenses</b>	<b>\$ 661,500</b>	Revenue Need to be applied to fee program.



# Consumers Price Index, SF Bay Area

---

- The draft fee study references use of the Consumer's Price Index for the San Francisco Bay Area.
- The budget subtotal can be increased each year by this index or 5%, whichever is lower.
- SF Bay Area CPI examples:
  - 2020: 2.00%
  - 2021: 4.24%
  - 2022: 4.88%
  - 2023: 2.62%

# Base Charge Justification

---

- As shown below, the base charge is calculated by charging all groundwater-using parcels for costs related to State-mandated requirements and twenty percent of the administration and management action budget.

SGMA Compliance Activities		
Annual Report Development	\$	35,000
Data Management System Maintenance	\$	10,000
GSP Period Update (5-Year Update)	\$	50,000
Collection of Monitoring Network Data	\$	25,000
20% of Administration and Management Action Budget	\$	67,000
<i>Budget to Base Charge:</i>		<i>\$ 187,000</i>

# Base Charge Rates

---

- The Base Charge Rate is calculated using the Base Charge budget amount and the total of groundwater using parcels, as shown below.

$$\frac{\$187,000}{5,255 \text{ Parcels}} = \$35.59$$

*\*Note: agricultural parcels are also charged the irrigated acreage fee.*

# Base Charge Revenue

All Direct Groundwater-Using Parcels - Base Charge				
Property Type	Rates Per Parcel	Total GW-Using Parcels	% of Parcels	Revenue
Residential Parcels				
<i>Base Charge:</i>	\$35.59	4,286	82%	\$152,518
Commercial / Industrial Parcels				
<i>Base Charge:</i>	\$35.59	80	2%	\$2,847
Agricultural Parcels				
<i>Base Charge</i>	\$35.59	615	17%	\$31,635
<i>Base Charge With Residence</i>	\$35.59	274		
Subtotal, Agricultural Parcels:		889		
Totals				
All GW-Using Parcels:		5,255	100%	\$187,000

# Public Water System Rate

---

- The charge per acre foot reflects the updated budget projection and average extraction in the Subbasin, as shown below:

$$\frac{\$661,500}{110,625 \text{ Acre Feet}} = \$5.98$$

# Public Water System Fees

Groundwater Extraction of Public Water Systems in the Cosumnes Subbasin										
Data Obtained Through Electronic Annual Reports (SWRCB)								Average Extraction (AF)	Revenue	
Name	PWS ID	Estimated Population Served	Reported Annual GW Extarction (AF)					5-Year Rolling Average	Rate Per AF	Revenue
			2018	2019	2020	2021	2022			
Hope Foundation/Moriah Heights	CA0300062	30	27.46		47.60	27.51	33.99	34.14	\$5.98	\$204.15
Ione Band of Miwok Indians	CA0300078	62	5.90		5.93	7.49	7.78	6.77	\$5.98	\$40.51
MP Associates, Inc.	CA0300524	170	0.15	0.14	0.06	0.08	0.12	0.11	\$5.98	\$0.65
Camanche North Shore Inc	CA0310008	255	51.33	52.24	59.18	58.93	52.72	54.88	\$5.98	\$328.18
AWA - Camanche Village	CA0310021	2,384	239.89	244.06	262.31	258.69	244.06	249.80	\$5.98	\$1,493.821
Laguna Del Sol Inc	CA3400181	470	0.00	0.00	0.00	23.92	23.61	9.51	\$5.98	\$56.84
Rancho Seco NGS (SMUD)	CA3400232	27.00	1.00	0.35	0.39	0.23	0.61	0.51	\$5.98	\$3.08
Dillard Elementary School	CA3400254	350	1.74	1.67	1.30	12.83	14.54	6.42	\$5.98	\$38.37
Arcohe Elem School - Main Campus	CA3400271	465	0.00	0.94	0.10	0.00		0.26	\$5.98	\$1.55
Wilton Bible Church	CA3400273	125	0.13	0.13	0.09	0.12	0.12	0.12	\$5.98	\$0.70
Rancho Seco Park	CA3400302	40	4.88	7.18	7.11	8.88	9.39	7.49	\$5.98	\$44.78
Cosumnes River Preserve Visitor	CA3400432	300	0.36	0.31	0.21	0.13	0.22	0.25	\$5.98	\$1.48
Church of Latter Day Saints, Galt	CA3400460	800			0.03	1.14	1.14	0.77	\$5.98	\$4.59
River City Recovery Center, Inc	CA3400464	60			0.01	0.02	0.01	0.01	\$5.98	\$0.09
City of Galt	CA3410011	26,536	4,500.91	4,266.45	4,780.04	4,602.85	4,313.46	4,492.74	\$5.98	\$26,866.60
RANCHO DEL ORO MHP	CA0300053	44	8.50	8.69	7.63	6.84	5.65	7.46	\$5.98	\$44.63
Richard A. Mcgee Training Center	CA3410802	300	42.55	39.54	31.69	33.10	19.21	33.22	\$5.98	\$198.64
<b>Totals:</b>								<b>4,904</b>	<b>\$29,329</b>	

# PWS GSA Reserve Calculation

---

- To determine the amount of the PWS Fee that will be allocated to the GSA Reserve Budget, we divide the GSA Reserve Budget amount by the average AF extracted in the Subbasin.

$$\frac{\$175,000}{110,625 \text{ Acre Feet}} = \$1.58$$

- \$1.58 of the total rate (\$5.98) would contribute to GSA administration and project exploration and be held by the respective GSAs in accordance with their charges to public water systems.

# Irrigated Acreage Fee Rate

---

- By subtracting revenue stemming from the Base Charge and PWS Fee, we can determine the amount of budget to be allocated to the Irrigated Acreage Fee, as shown below:

Total Budget:	\$ 661,500
Base Charge Revenue:	\$187,000
Public Water System Fee Revenue:	\$29,327
Revenue Assigned to Irrigated Acreage Fee:	\$ 445,173

- Applying this budget amount to total number of irrigated acres, we calculate the Irrigated Acreage Fee rate:

$$\frac{\$445,173}{44,591 \text{ Irrigated Acres}} = \$10.00$$



# Irrigated Acreage Fee Revenue

---

Agricultural Irrigators - Irrigated Acreage Charge			
Revenue Type	Rate Per Irrigated Acre	Total Irrigated Acres	Revenue
Irrigated Acreage Fee	\$10.00	44,591	\$445,910

# Irrigated Acreage GSA Reserve Calculation

- To determine the amount of the Irrigated Acreage Fee that will be allocated to the GSA Reserve Budget, we first subtract the PWS contribution to this Reserve from the budget amount.

\$175,000		\$7,749		\$167,251
(Project Reserve Budget)	-	(PWS Contribution)	=	(Irrigated Acreage Contribution)

- We then divide the *remaining* GSA Reserve Budget amount by the total irrigated acres.

$$\frac{\$167,251}{44,591 \text{ Irrigated Acres}} = \$3.75$$

- \$3.75 of the total rate (\$10.00) would contribute to project feasibility and be held by the respective GSAs charging agricultural irrigators.

# Revenue Summary, All Sources

All Direct Groundwater-Using Parcels - Base Charge				
Property Type	Rates Per Parcel	Total GW-Using Parcels	% of Parcels	Revenue
Residential Parcels				
<i>Base Charge:</i>	\$35.59	4,286	82%	\$152,518
Commercial / Industrial Parcels				
<i>Base Charge:</i>	\$35.59	80	2%	\$2,847
Agricultural Parcels				
<i>Base Charge</i>	\$35.59	615	17%	\$31,635
<i>Base Charge With Residence</i>	\$35.59	274		
Subtotal, Agricultural Parcels:		889		
Totals				
All GW-Using Parcels:		5,255	100%	\$187,000

Public Water Systems - Extraction Charge			
Revenue Type	Rate Per AF Extracted	Average AF Extracted Annually	Revenue
Public Water Systems	\$5.98	4,904	\$29,327

Agricultural Irrigators - Irrigated Acreage Charge			
Revenue Type	Rate Per Irrigated Acre	Total Irrigated Acres	Revenue
Irrigated Acreage Fee	\$10.00	44,591	\$445,910

Total Revenue, All Sources: <b>\$662,237</b>
--

# Base Charge Revenue by GSA

Groundwater Using Parcels By GSA						
GSA	Residential Parcels	Commercial Parcels	Agricultural Parcels	Agricultural Parcels with a Residence	Total Parcels	Total Revenue
Amador GSA	169	13	1	63	246	\$8,754
City of Galt GSA	17	0	0	0	17	\$605
Clay WD GSA	11	2	17	6	36	\$1,281
Galt ID GSA	1,845	33	322	98	2298	\$81,775
Omochumne Hartnell WD GSA	291	3	52	32	378	\$13,451
Sacramento County GSA	167	8	56	24	255	\$9,074
Sloughhouse RCD GSA	1,786	21	167	51	2025	\$72,060
Totals:	4,286	80	615	274	5,255	\$187,000

# PWS Revenue by GSA

---

Public Water System Fees By GSA					
GSA		PWS AF Extracted	Total Charge For Public Water Systems	Contribution to CGA	Project Reserve Funds Held
Amador County GSA		353.17	\$2,112	\$1,554	\$558
City of Galt GSA		4,493.51	\$26,871	\$19,771	\$7,100
Clay Water District GSA		0.00	\$0	\$0	\$0
Galt ID GSA		0.27	\$2	\$1	\$0
Omochumne Hartnell WD GSA		9.51	\$57	\$42	\$15
Sacramento County GSA		33.47	\$200	\$147	\$53
Sloughouse RCD GSA		14.53	\$87	\$64	\$23
Totals:		4,904	\$29,329	\$21,580	\$7,749

# Irrigated Acreage Revenue by GSA

Irrigated Acreage Fee By GSA						
GSA	Number of Parcels with Irrigated Acreage	Irrigated Acreage	Rate	Revenue	Contribution to CGA	Project Reserve Funds Held
Amador GA	2	40	\$10.00	\$400	\$250	\$150
City of Galt	0	0	\$10.00	\$0	\$0	\$0
Clay WD	28	2,217	\$10.00	\$22,167	\$13,855	\$8,313
Galt ID	689	17,584	\$10.00	\$175,842	\$109,901	\$65,941
Omochumne Hartnell WD	149	2,858	\$10.00	\$28,575	\$17,859	\$10,716
Sacramento County GSA	94	6,808	\$10.00	\$68,078	\$42,548	\$25,529
Sloughhouse RCD	327	15,085	\$10.00	\$150,849	\$94,281	\$56,568
Totals:	1,289	44,591		\$445,911	\$278,694	\$167,217

# Total Revenue by GSA

Total Revenue By GSA, All Sources							
GSA	Base Charge Revenue	Irrigated Acreage Revenue	PWS Revenue	Total Revenue	% of Total Revenue	Total Contribution to CGA	Total Project Reserve Funds Held
Amador GSA	\$8,753.95	\$400.00	\$2,111.94	\$11,265.88	2%	\$10,558	\$708.00
City of Galt GSA	\$604.95	\$0.00	\$26,871.19	\$27,476.14	4%	\$20,376	\$7,099.75
Clay WD GSA	\$1,281.07	\$22,167.30	\$0.00	\$23,448.37	4%	\$15,136	\$8,312.74
Galt ID GSA	\$81,774.69	\$175,841.80	\$1.64	\$257,618.13	39%	\$191,677	\$65,941.11
Omochumne Hartnell WD GSA	\$13,451.19	\$28,575.10	\$56.84	\$42,083.13	6%	\$31,352	\$10,730.68
Sacramento County GSA	\$9,074.22	\$68,077.50	\$200.12	\$77,351.84	12%	\$51,770	\$25,581.94
Sloughhouse RCD GSA	\$72,059.94	\$150,849.20	\$86.92	\$222,996.06	34%	\$166,405	\$56,591.41
Totals:	\$187,000	\$445,911	\$29,329	\$662,240	100%	\$487,274	\$174,966

# Fee Implementation - Water Code § 10730

- Water Code § 10730 regulatory fees can be used to fund GSA program administration – but *cannot fund* capital projects.
- GSAs must plan for public notice 20-days prior to a public meeting (fees imposed by resolution).
- If charging de minimis extractors, GSAs must regulate these users pursuant to the GSP.



# Fee Implementation – Water Code § 10730.2

- Water Code § 10730.2 property related fees can be used for a wide range of GSA activities – *including* capital projects.
- GSAs must plan for 45-day mailed notice period and public hearing (protest hearing).
- If greater than 50% of affected property owners submit written protest, the fee cannot be implemented.

**Sloughhouse Resource Conservation District  
Board of Directors Meeting**

Agenda Date: April 10, 2024

Agenda Item #: #6

Agenda Item Subject: **South American Subbasin Groundwater Sustainability Plan  
Implementation**

To: SRCD Board of Directors

From: SRCD Staff

---

**South American Subbasin Groundwater Sustainability Plan (GSP) Implementation**

Links: [South American Subbasin Website](#)

**GSA Contributions**

Sloughhouse RCD has not yet made a contribution to the South American Subbasin for Fiscal Year 2022-2023 as we are waiting to be invoiced (potentially arriving in May).

The budget for the joint GSA efforts in the South American Subbasin for Fiscal Year 2023-2024 is the same as the previous year and the Sloughhouse RCD contribution would be the same (\$8,325). Starting in Fiscal Year 2024-2025 work on the 5-year Update to the South American Subbasin will begin and a separate funding agreement will need to be developed.

SASb recently met on March 26, 2024 to discuss the Domestic Well Advisory Task Force, the Annual Report and DWR required 5-year evaluation preparation in which the South American Subbasin is already mapping out. A schedule of meetings for the new Fiscal Year will be decided scheduled shortly and disseminated.

**Attachments:** [SASb Annual Report \(link\)](#)

[Water Quality Time Series \(link\)](#)

[Hydrograph Compilation \(link\)](#)

**Sloughouse Resource Conservation District  
Board of Directors Meeting**

Agenda Date: April 10, 2024

Agenda Item #: #7

Agenda Item Subject: **SRCD Staff Report**

To: SRCD Board of Directors

From: SRCD Staff

**Spring Groundwater Monitoring**

Staff will be working with O’Sullivan Pump Co. to complete the Spring 2024 Groundwater Monitoring on April 16 and 17. There are 14 wells total to be monitored and 13 separate locations. Updates on this event/data will be presented at the May 2024 Board Meeting.

Network ID WL	Newtork ID WQ	DMS ID	GSA
RMW-WL5	RMW-WQ3	SH_Mulrooney	Galt Irrigation District
RMW-WL7	--	06N06E33J002M	SRCD
RMW-WL8	--	06N06E11J003M	SRCD
RMW-WL9	RMW-WQ13	75 HP Wohle	Clay Water District
RMW-WL11	--	SH_Washburn	SRCD
RMW-WL12	--	06N08E15J001M	SRCD
Sup-WL7	RMW-WQ4	SH_Garcia	SRCD
Sup-WL9	RMW-WQ14	SH_Vanwarmerdam	Galt Irrigation District
--	RMW-WQ6	Dillard Elementary_Dom Well	SRCD
Sup-WL1	--	SH_ClayStationRanch	SRCD
Sup-WL2	--	USGS-381956121053401	SRCD
Sup-WL5	--	07N08E10K002M	SRCD
GS-S-ISW		New Hope Road Prop 68 shallow	SRCD
GS-M-WL		New Hope Road Prop 68 mid	SRCD